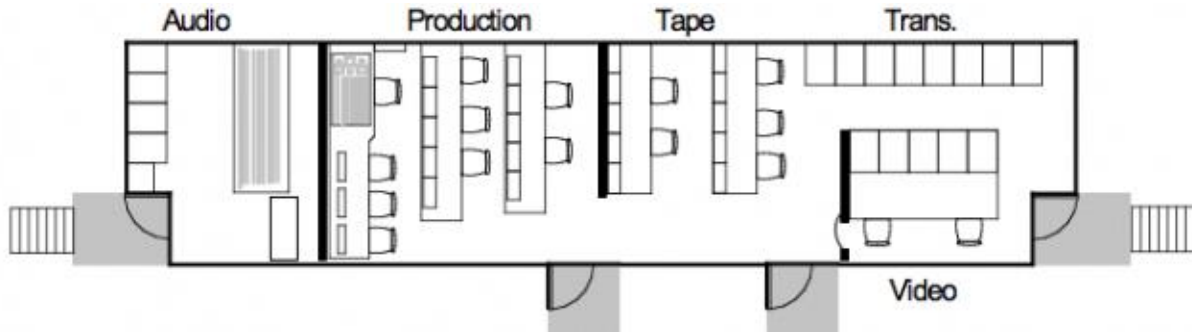


## IMS HD-4 Spec Sheet



### PRODUCTION

3 Bench expando  
4 Position 1st bench  
4 Position 2nd bench  
4 Position 3rd bench  
120 Source - Production Monitor Wall

### SWITCHING

Grass Valley HD Kalypto 4 M/E Switcher  
90 x 48 Fully Loaded w/6 Transform Engines  
Abekas DVEous MX-3 Dual Twin  
Lance TDC-100 Spotbox Controller

### CAMERAS

11 Grass Valley LDK8000 Elite  
Worldcams 720p, 1080i, 24p  
7 Super expanders  
2 Canon 100x HD lenses  
5 Canon 86x HD lenses  
4 Canon 22x HD lenses  
7 Vinten Vector 750 Pan Heads  
7 Vinten Tripods  
4 Vinten Vision 100 ENG Tripods  
Wired for 18 cameras

### GRAPHICS

Chyron Mosaic XL

### VIDEO PROCESSING

6 For-A FA 9100/RPS Frame Sync with  
Up/Down/Cross/Color Correction  
8 AJA FS-1 Frame Sync / Converter

6 Harris X75HD Frame Sync / Converter  
8 Evertz HD Frame Sync  
2 Evertz 5600MSC Master Sync Generator

### AUDIO

SSL C100-HD Digital 56 Fader Audio Console  
128 analog inputs; 96 AES Inputs;  
128 Channel Pro Tools Madi I/O  
Genelec Surround Sound Monitoring  
Dolby Surround Encoding  
SRS Circle Surround Encoding  
2 360 Systems Digicart E w / Remote  
Tascam CD Recorder/Player  
2 Yamaha SPX 2000 Effects Processors  
4 DBX 160A Compressor Limiters  
8 Announce Talkback Boxes  
8 Sennheiser HMD-25 Annc Headsets  
5 Sennheiser HMD-280 Annc Headsets  
8 Sony ECM77B Lavalier Mics  
2 Sony ECM66B Lavalier Mics  
11 Sennheiser ME-66 Shotgun Mics  
8 Sennheiser MKH-416 Shotgun Mics  
4 Sennheiser MKH-70 Shotgun Mics  
8 Electrovoice RE-50 Handheld Mics  
8 Electrovoice 635B Handheld Mics

### RECORDING

2 EVS XT3 6 Ch LSM  
2 EVS XT3 6 Ch R/O  
EVS XS 4 Ch Spotbox  
EVS X-File 3  
*Wired for 1 additional 6 Channel EVS*

Panasonic AJ-HD1800 DVCPPro  
Sony PDW-F75 – XDCam HD VTR  
Sony HDW-D1800 HDCAM / Digibeta  
Sony HDW-M2000 HDCAM / Digibeta  
2 DVD Recorder/Players  
*Wired for 10 additional HD/SD Decks*

### **ROUTING**

Evertz 288x288 HD-SDI Video Router with X-Link  
NVision 256 X 256 Audio Router

### **COMMUNICATIONS**

RTS Adam 136 Ports with RVON  
KP-32 & KP12 Panels  
12 IFB Channels  
12 PL Channels  
6 Tiff 2000A Telephone Interface  
2 Telos 1+1 Telephone/QKT interface  
25 RTS 325 Beltpacks  
15 RTS 4030 2 Ch IFB Boxes

### **VIDEO MONITORING**

#### **Production**

32 - 24" LCD Monitors  
120 source VIP plus PGM & PVW

#### **Rear Benches**

8 - 7" Marshall LCD each  
2 – 20" LCD each

#### **Recording / Replay**

2 – 48" LCD & 5 – 20" LCD T1  
2 – 32" LCD & 5 – 20" LCD T2

#### **Video**

2 – 22" Sony Trimaster match monitors  
7 – 20" LCD

#### **Audio**

2 – 32" LCD

### **Field**

6 Viewsonic 16" HD LCD Monitor

### **POWER**

208 Volts / 3 Phase / 200 Amp service  
200' power cable

### **DIMENSIONS / WEIGHT**

#### **Deployed footprint**

60' L x 19'6" W Working Space Required  
48' x 5' Curb Side Expandable Section  
80,000 lbs.

#### **Available upon request:**

Fingerworks Telestrator  
Wide Angle lens